

# CHECK PANEL

## INDEX

GENERAL DESCRIPTION . . . . .	18-2
DOORS OPEN INDICATOR . . . . .	18-3
Wiring Diagram . . . . .	18-3
Functional Description . . . . .	18-4/1
Components and Connectors . . . . .	18-4/2
Location of Components . . . . .	18-7
CLOCK . . . . .	18-8
Wiring Diagram . . . . .	18-8
Functional Description . . . . .	18-9
Components and Connectors . . . . .	18-9
Location of Components . . . . .	18-11
FAULT-FINDING TABLE . . . . .	18-12

## GENERAL DESCRIPTION

The Check Panel display located in the centre of the dashboard integrates the indications of the instrument cluster with certain indicators and operating switches:

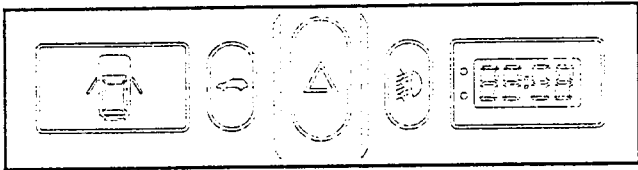
- doors open indicator
- luggage compartment opening switch
- hazard warning light switch (blinker)
- foglamp switch
- digital clock

This section describes the following functions

- DOORS OPEN INDICATOR,
- CLOCK,

while for the switches, reference should be made to the sections to which they belong, i.e.:

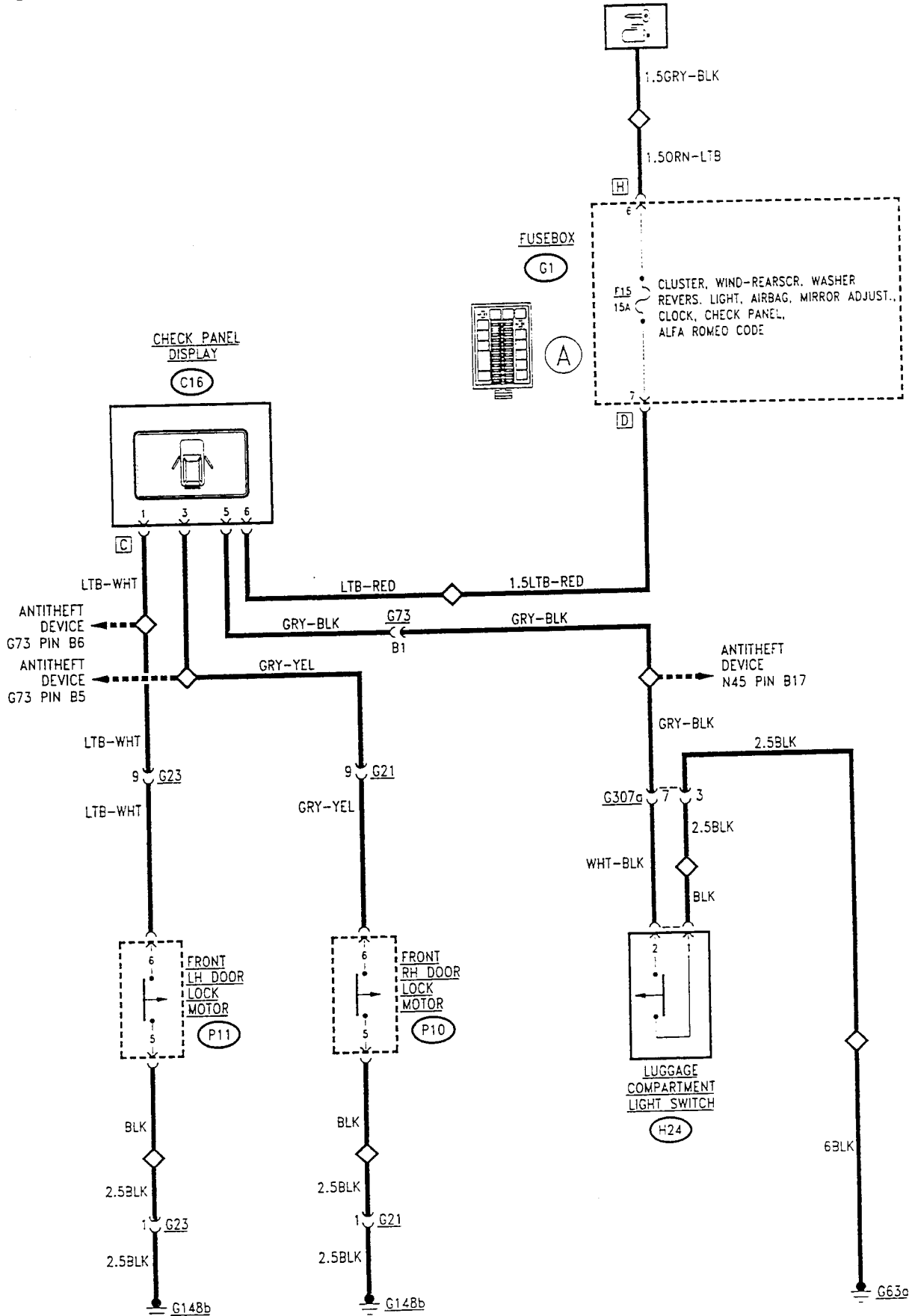
- luggage compartment opening switch: see section "Luggage compartment opening control"
- hazard warning light switch: see section: "Direction indicators and hazard warning lights"
- Foglamp switch: see section " Foglamps and rear fog guards".



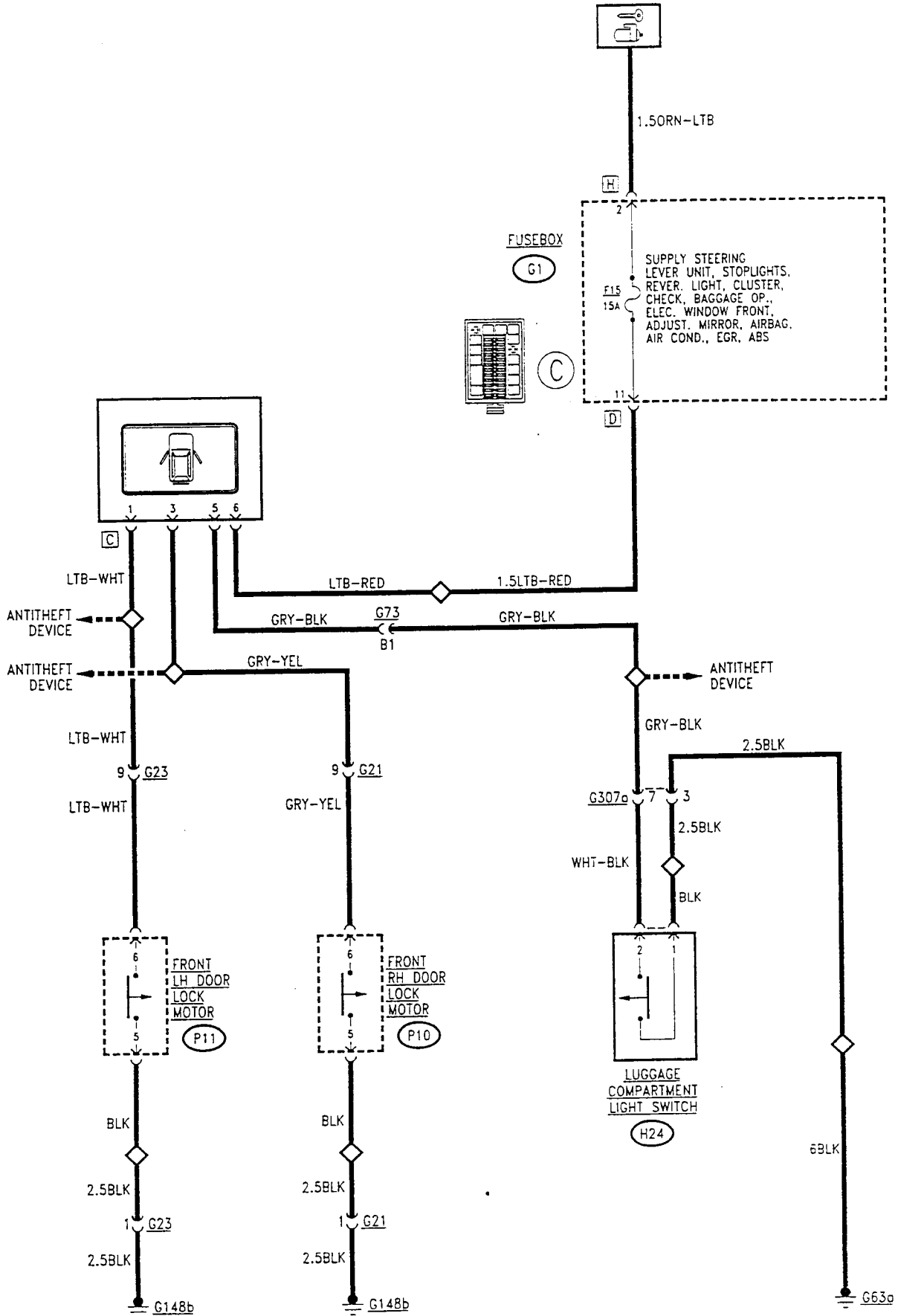
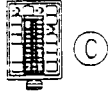
**N.B.:** Not all versions possess all these functions.

## DOORS OPEN INDICATOR

### Wiring Diagram



## Wiring Diagram



## Functional Description

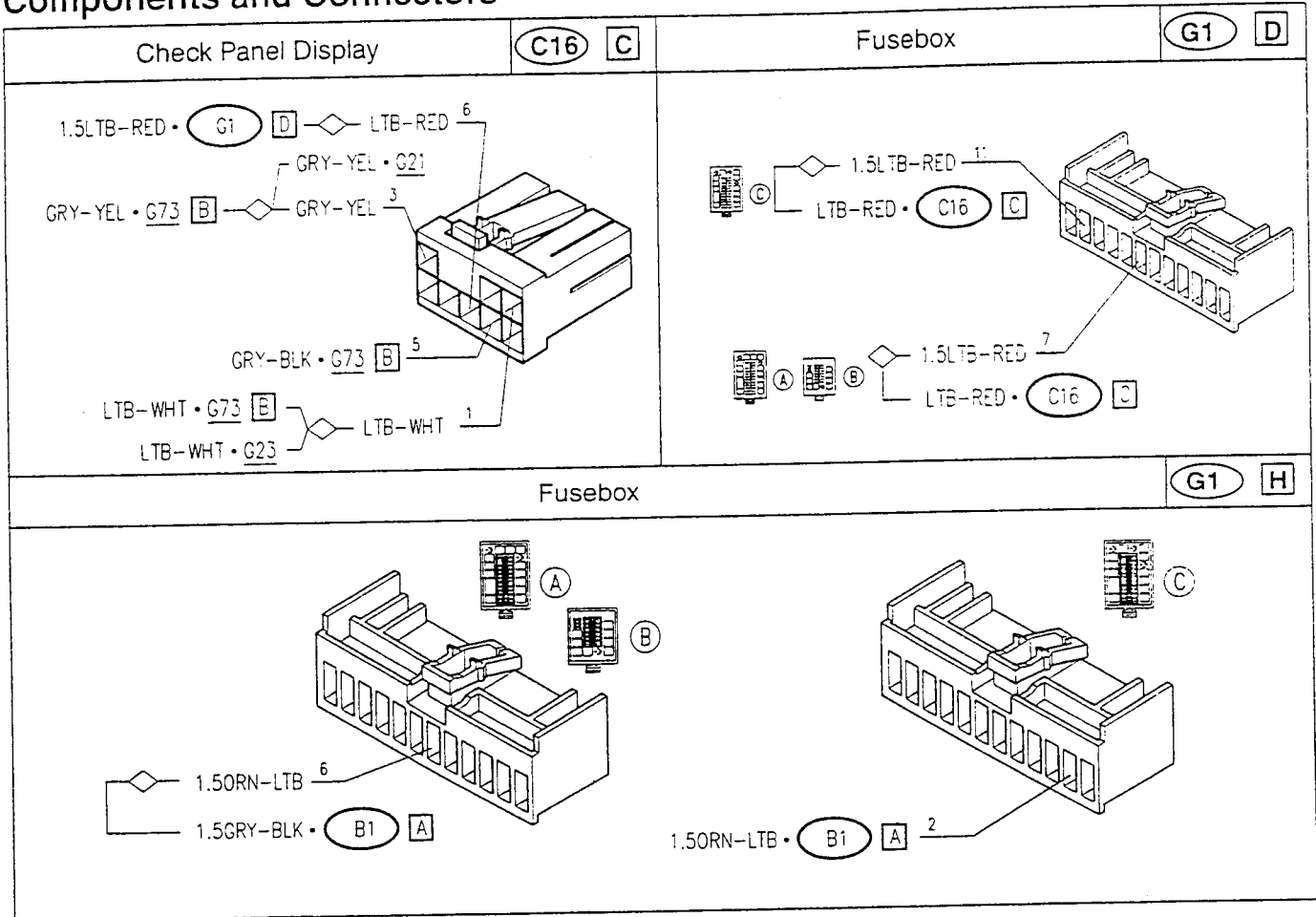
The door locking device **P10** and **P11**, located on each door in correspondence of the lock, also contains a microswitch which closes when the door is open, thereby sending an earth signal to the display **C16** at pins 3 and 1 respectively of connector **C**.

In a similar way switch **H24**, which turns on the light in the luggage compartment, closes when the tailgate is

open, sending an earth to the display **C16** at pin 5 of connector **C**.

The "key-operated" supply reaches pin 6 of the same connector through fuse **F15** of fusebox **G1**; the earth signals from the doors turn on the corresponding red leds.

### Components and Connectors



## Components and Connectors (cont.d)

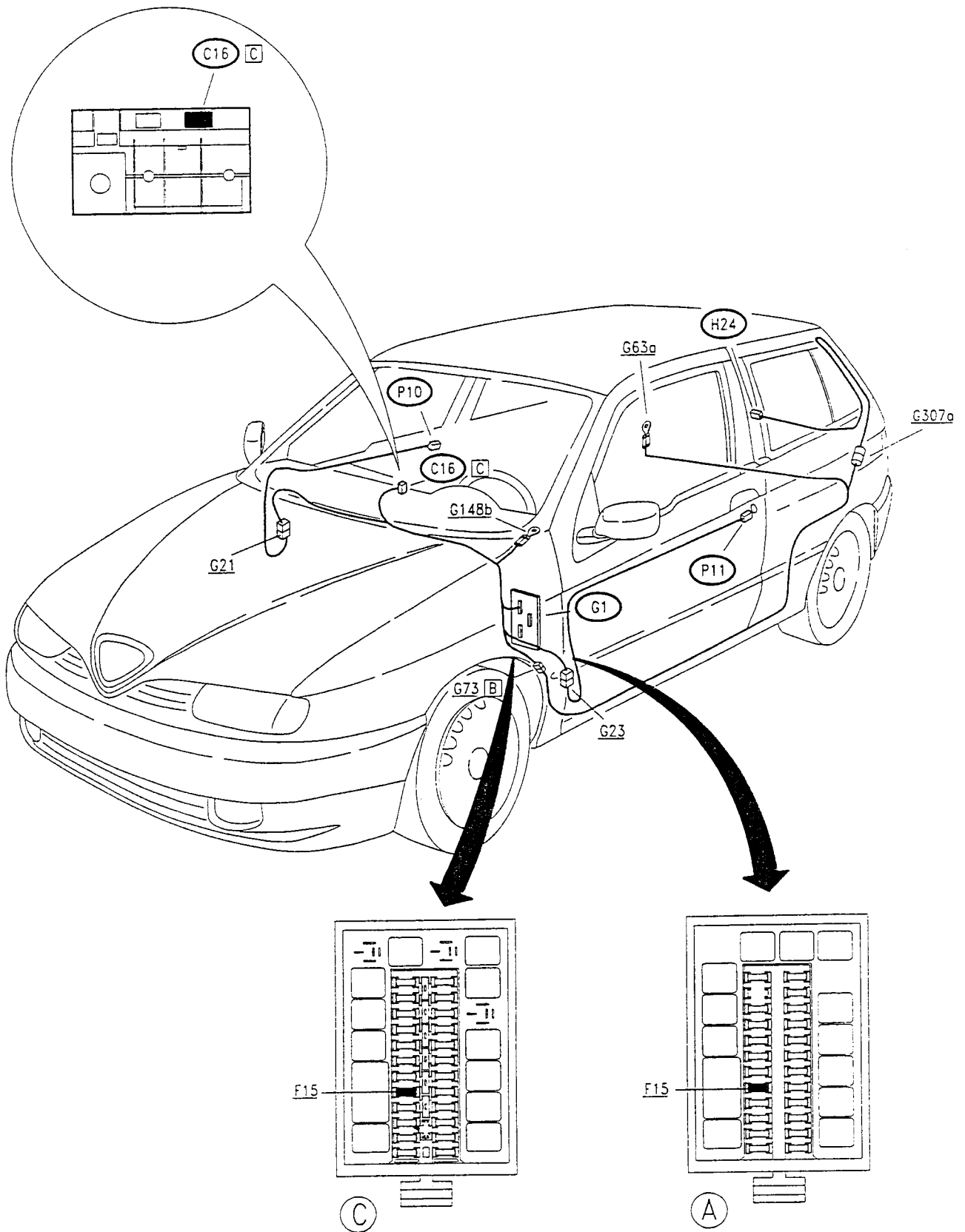
<p>RH front door wiring connector</p>	<p><b>G21</b></p>
<p>LH front door wiring connector</p>	<p><b>G23</b></p>
<p>RH rear earth</p>	<p><b>G63a</b></p>
<p>Rear services connector</p>	<p><b>G73 [B]</b></p>

### Components and Connectors (cont.d)

Earth under LH dashboard		G148b
Rear wiring/luggage compt.wiring A connector		G307a
Luggage compartment light switch	H24	RH front door lock motor
LH front door lock motor		P11

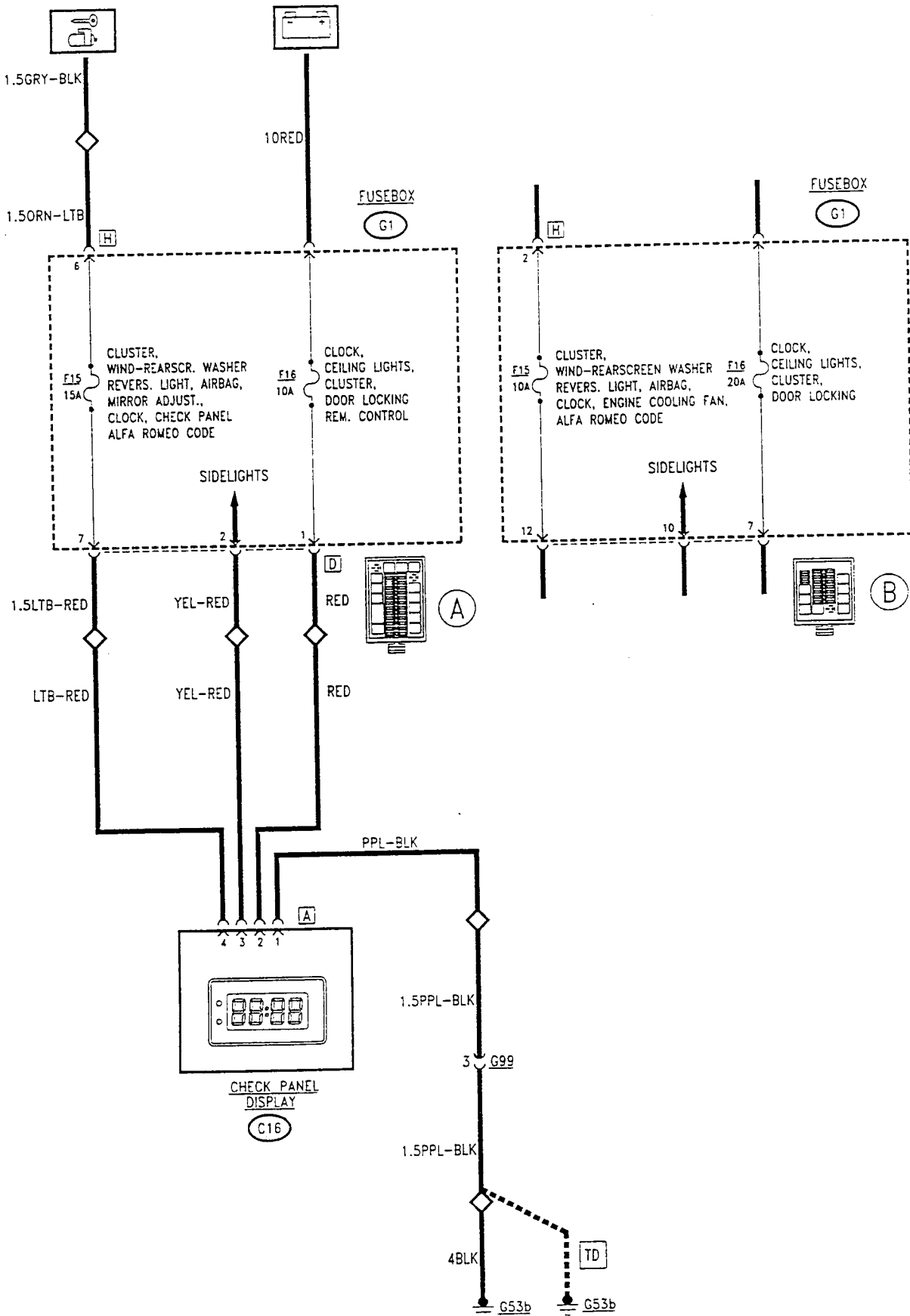


## Location of Components



## CLOCK

### Wiring Diagram







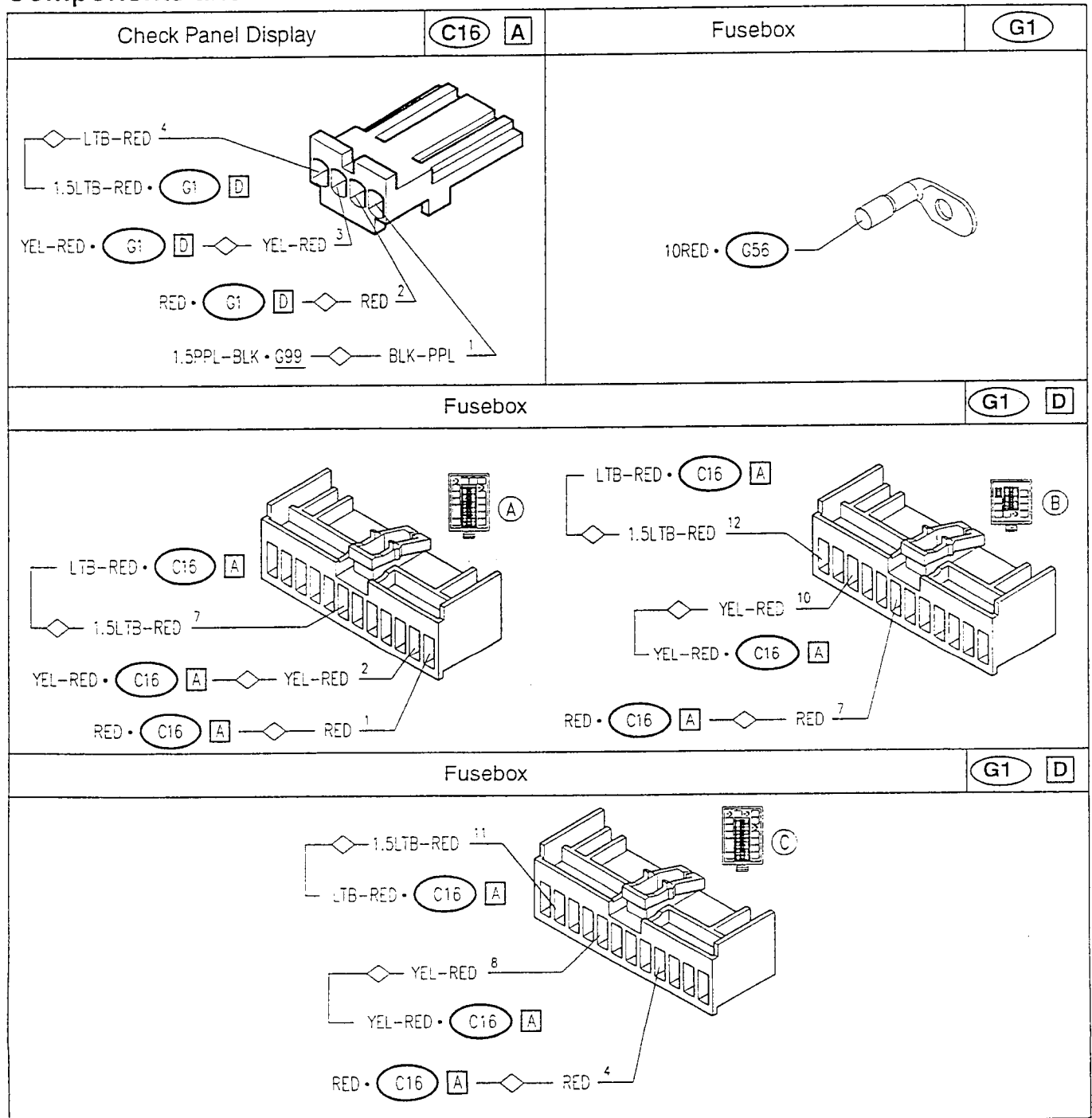
### Functional Description

The clock, located in the display C16, is supplied by direct voltage (battery) through fuse F16 of fusebox G1 which is connected to pin 2 of connector A of the actual display.

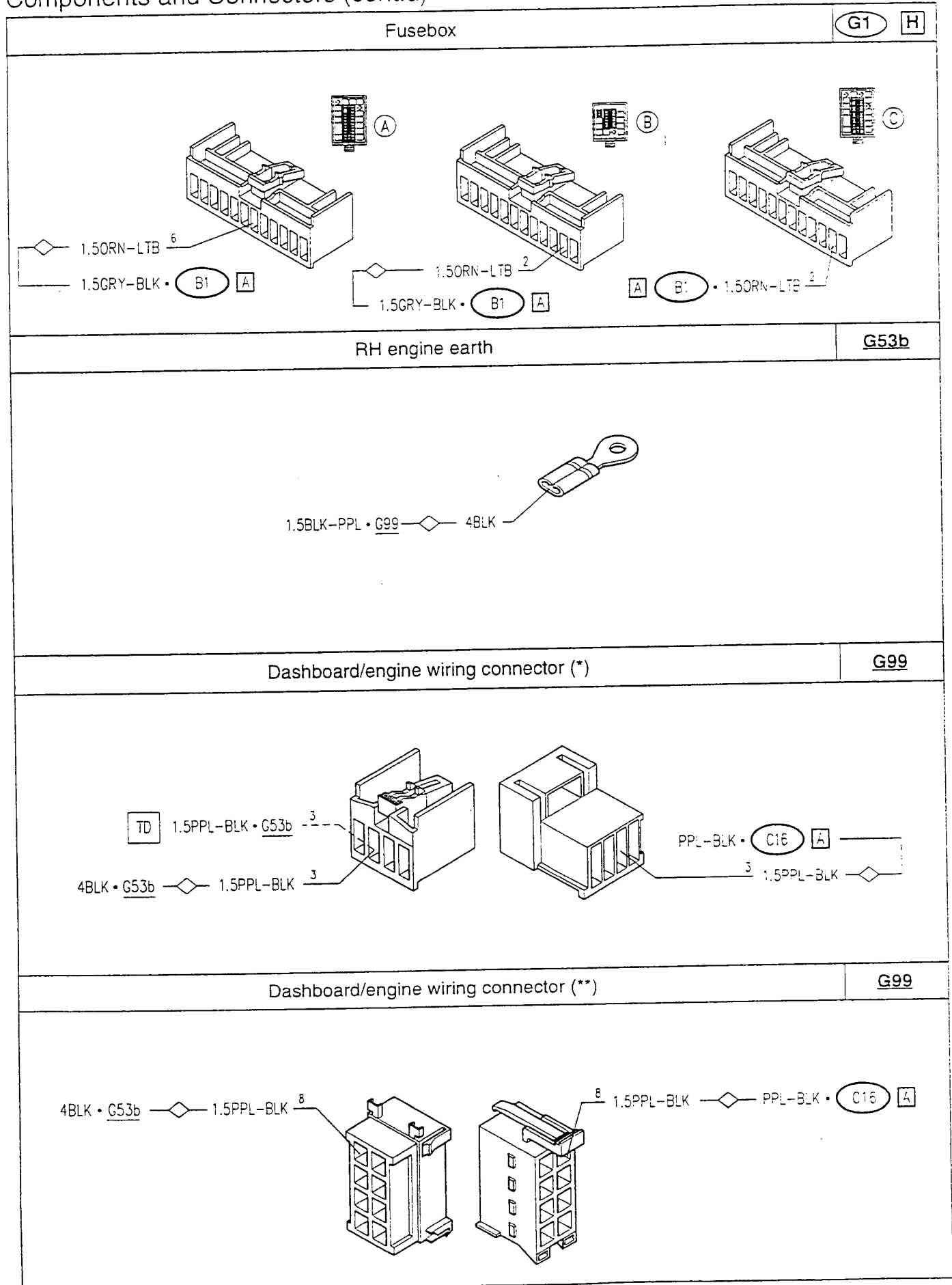
**N.B.:** disconnecting the battery, the clock stops and must be reset using the 2 pushbuttons - hours and minutes - when the supply is re-connected.

Pin 4 receives the "key-operated" supply through fuse F15 of fusebox G1, while pin 1 is connected to earth; the key-operated supply lights up the numbers of the actual clock display (which stay off when the key is not engaged); lastly, a sidelights on signal reaches pin 3 which dims the light of the numbers.

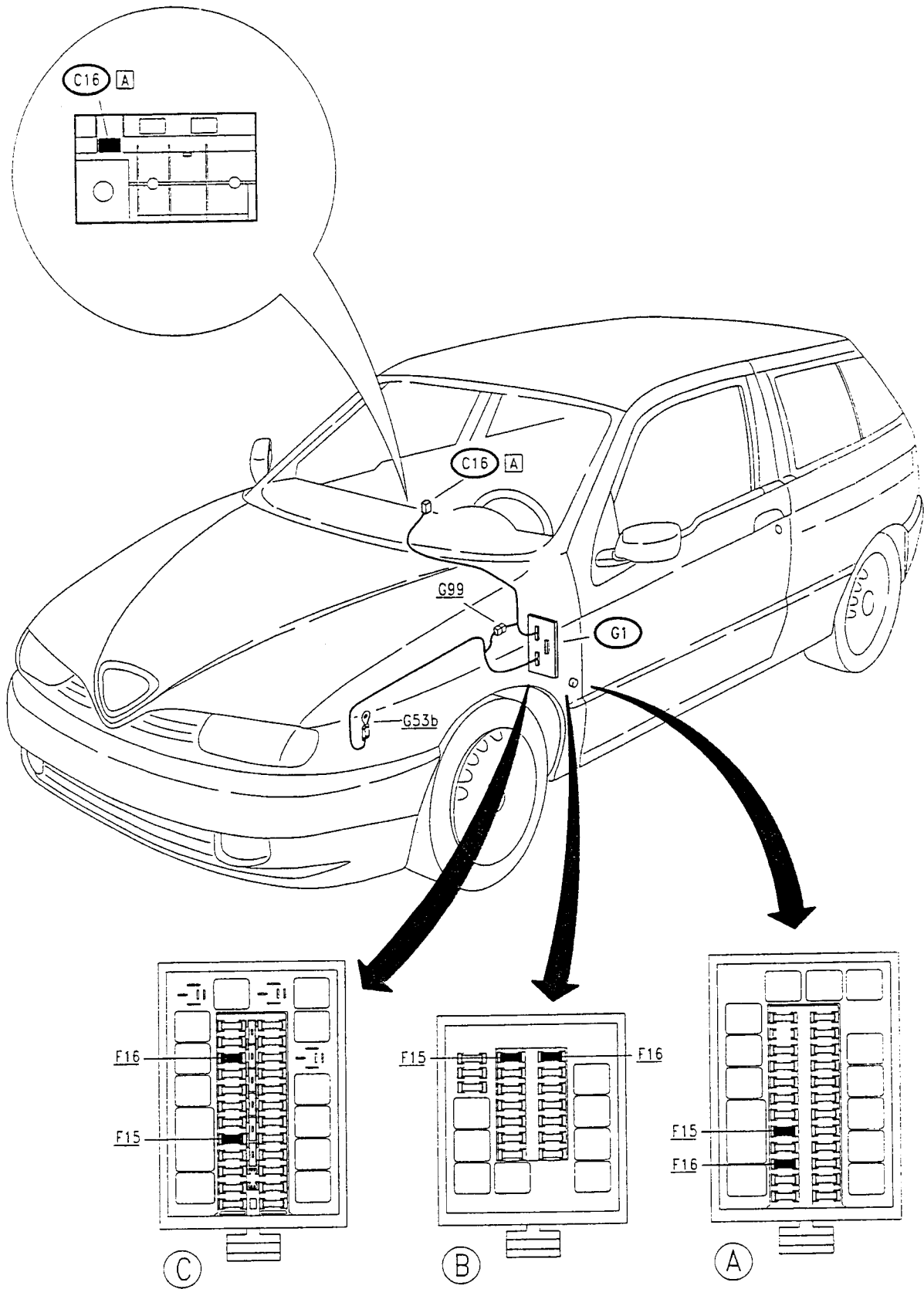
### Components and Connectors



### Components and Connectors (cont.d)



## Location of Components



## FAULT-FINDING TABLE

Fault	Component to be checked					
	F15	F16	C16 (*)	P10	P11	H24
Display out completely	•		•			
Clock		•	•			
Display fails to light up			•			
One of the switches not working			•			
RH front door open			•	•		
LH front door open			•		•	
Luggage compt.open						•

(\*) The Check Panel display C16 cannot be overhauled. Therefore, in the event of a failure, individual components (clock, doors display, switch) cannot be changed and the whole unit must be replaced