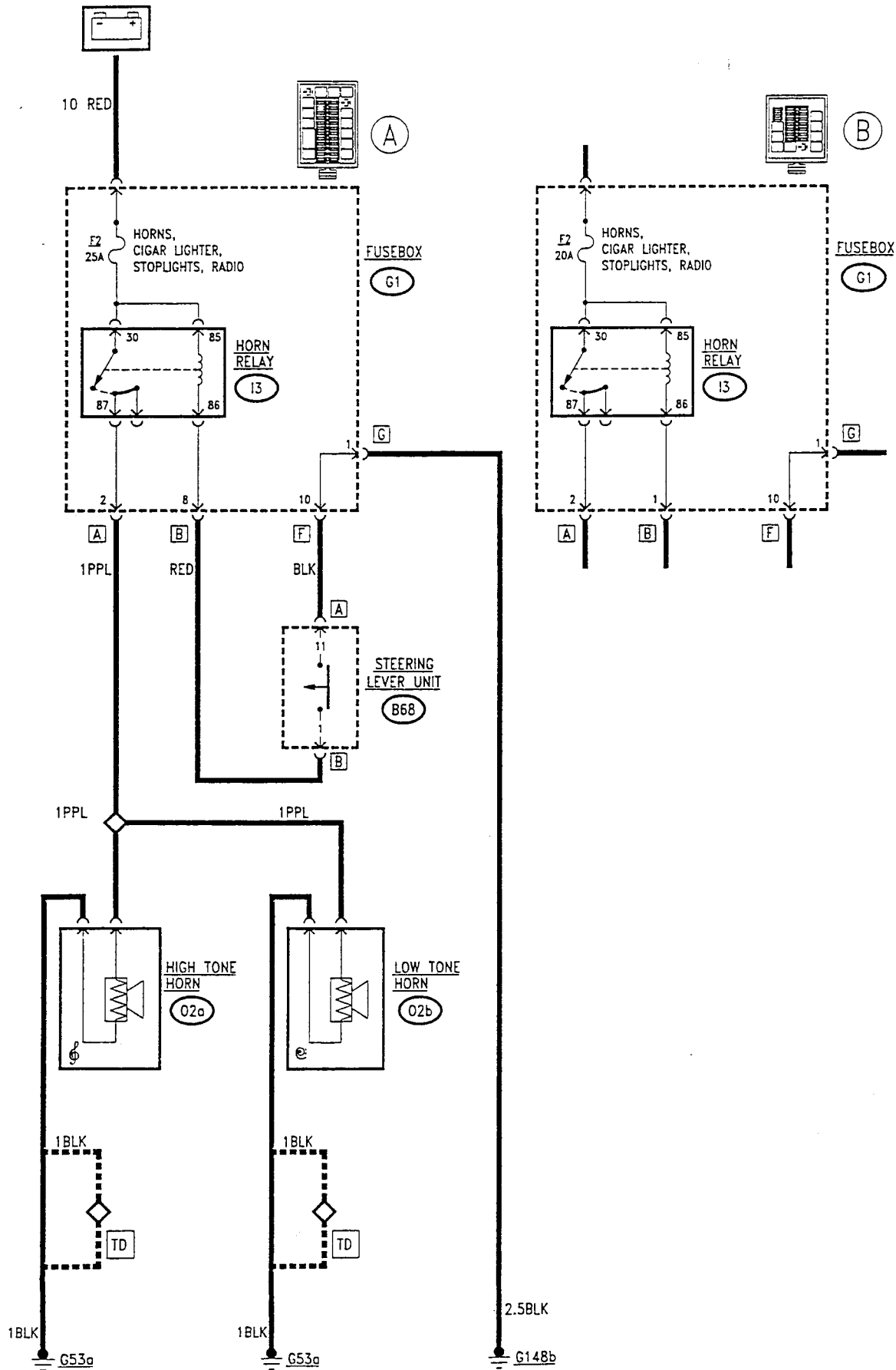


HORNS

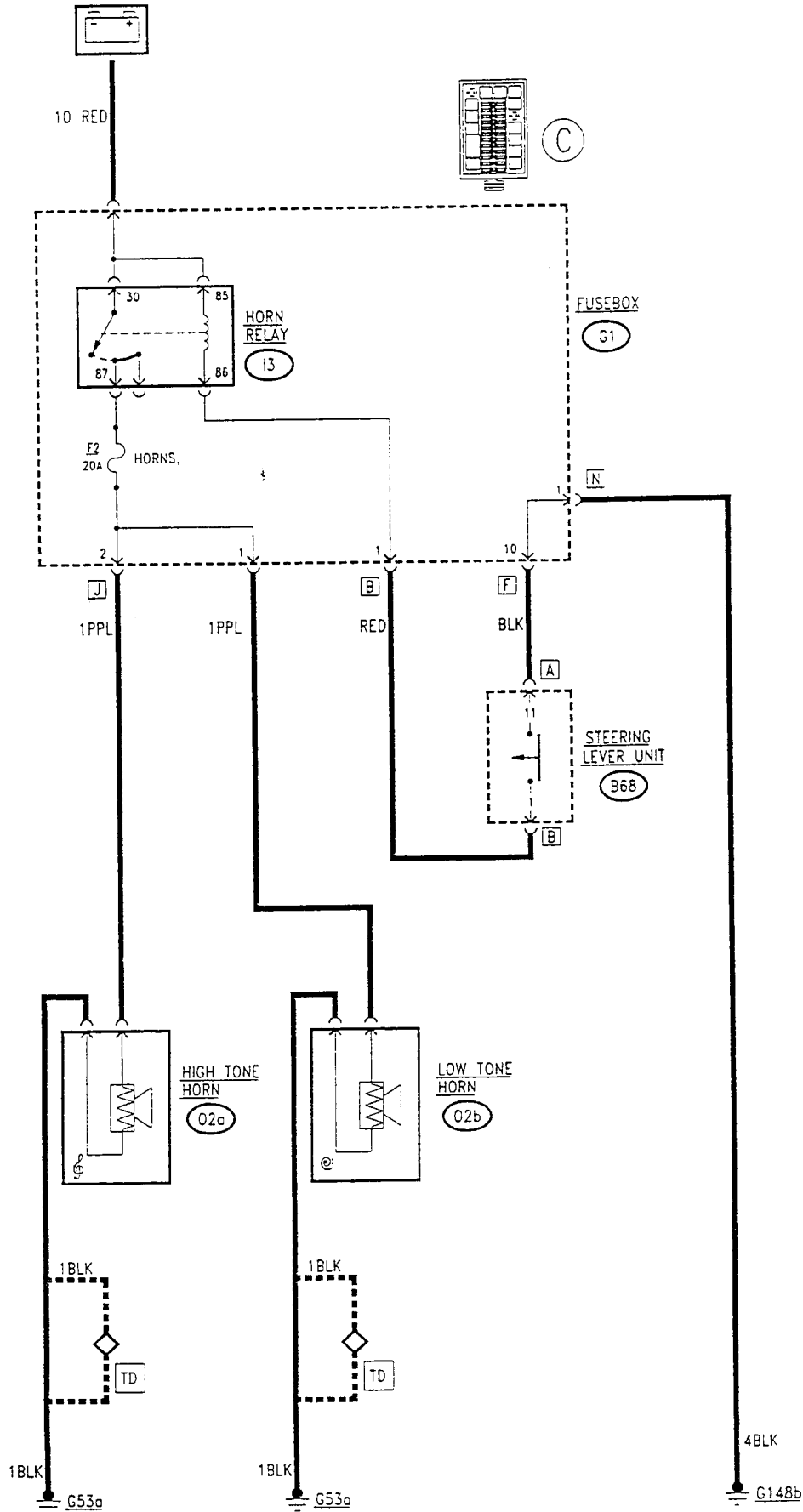
INDEX

WIRING DIAGRAM	15-2
GENERAL DESCRIPTION	15-3
FUNCTIONAL DESCRIPTION	15-3
COMPONENTS AND CONNECTORS	15-3
LOCATION OF COMPONENTS	15-5
FAULTFINDING TABLE	15-6

WIRING DIAGRAM



WIRING DIAGRAM



GENERAL DESCRIPTION

The car horn system is formed of two horns with different tones: one high tone and the other low tone: they are both activated simultaneously.

The horns are operated conventionally pressing the button located in the centre of the steering wheel (versions without airbag) or one of the two switches on the spokes at the side of the airbag cushion (versions with airbag).

For the obvious safety reasons the horns can be activated at all times even if the ignition key is not engaged.

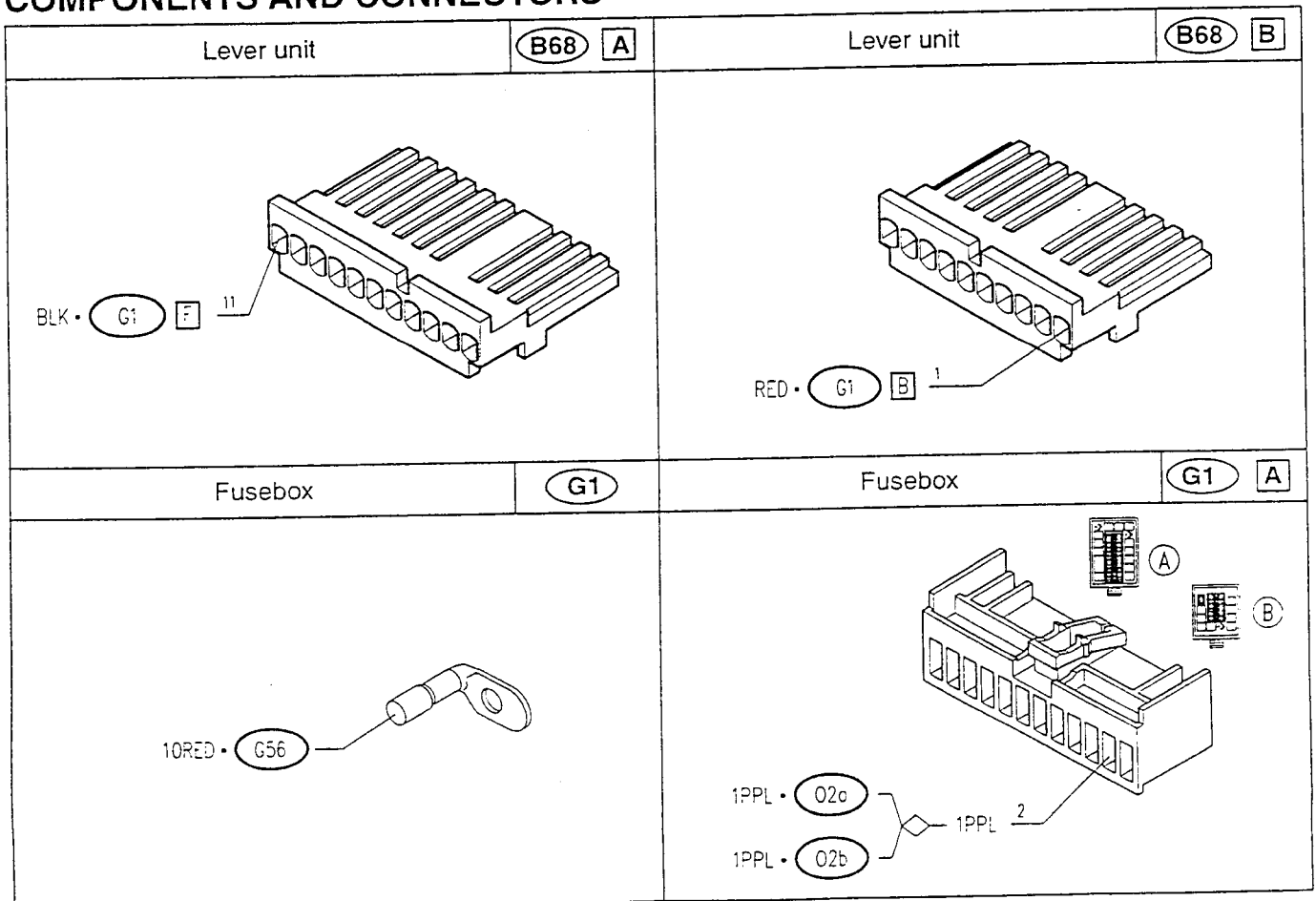
FUNCTIONAL DESCRIPTION

The horns relay switch I3, located in fusebox G1, is supplied by the battery through fuse F2, also in G1.

The coil of relay switch I3 is energized with an earth signal leading from the horn control switch which is connected to the lever unit B68 (this connection is made in a special way for the versions with airbag: see "Checking Components").

This way the supply is sent by the relay switch to the horns O2, which are already connected to earth.

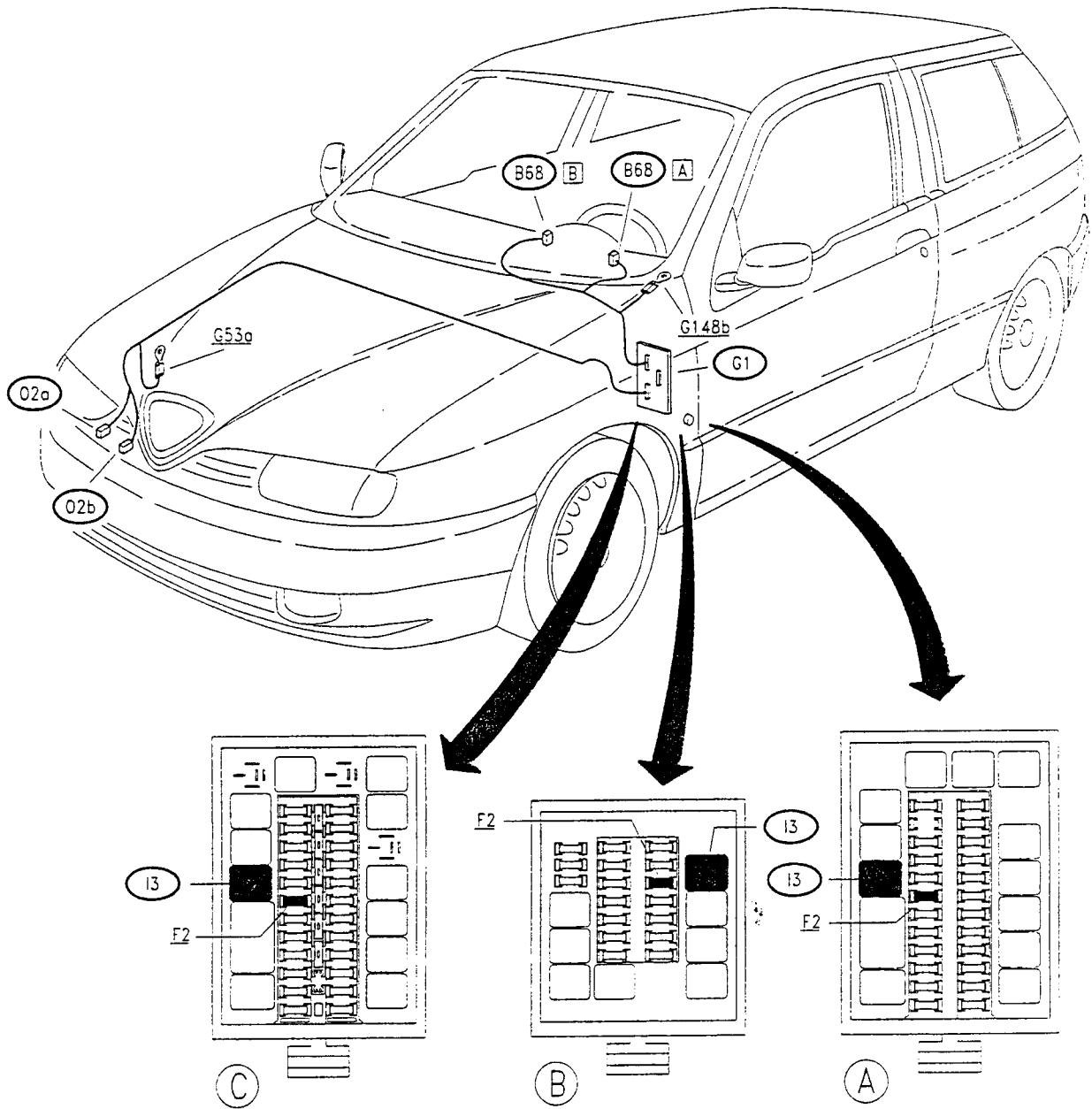
COMPONENTS AND CONNECTORS



COMPONENTS AND CONNECTORS (cont.d)

<p>Fusebox G1 B</p>	<p>Fusebox G1 F</p>
<p>Fusebox G1 G</p>	<p>Fusebox G1 N</p>
<p>RH engine compartment earth G53a</p>	<p>Earth under LH dashboard G148b</p>
<p>High-tone horn O2a</p>	<p>Low-tone horn O2b</p>

LOCATION OF COMPONENTS



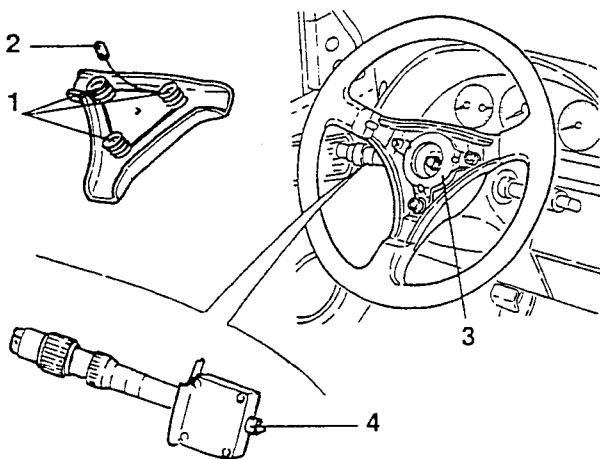
FAULTFINDING TABLE

Failure	Component to be checked			
	F2	O2	I3	B68
Horns failing to work	•	•	•	•
Horns working badly (out of tune)		•		

CHECKING COMPONENTS

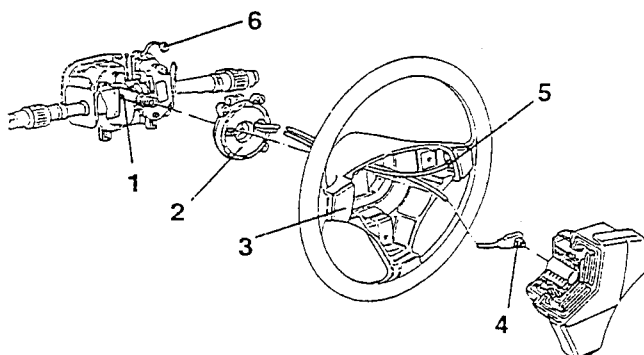
Horns control (in **B68**)

Versions without airbag



The three springs (1) on the steering wheel cover connect the earth plate (3) to earth through the special connection (2); the plate is in turn connected with contact (4) on the lever unit **B68**.

Versions with airbag



In cars with airbag the sliding contact is replaced by the clock spring cable (2) which connects the steering wheel to the steering column.

The horn pushbuttons (3) are connected to connector (5) (the left one is connected to the right one by a wire inside the steering wheel).

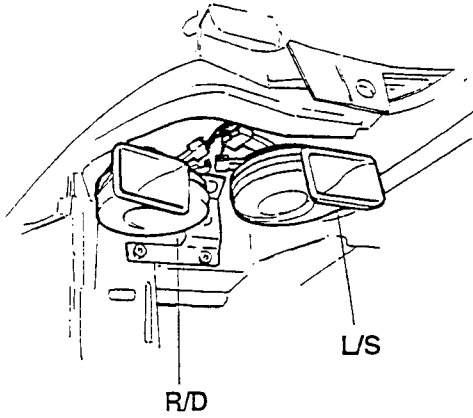
The control switch (1) is pressed through the clock spring cable and the ignition switch as for the versions without airbag.

N.B. To remove the airbag connector **G383** (6) and the module connector **R23** (4) extreme caution must be used: see the "Airbag" section and Group 70 - "SAFETY BELTS AND ACCESSORIES"

Horns (02)

"R/D" low tone

"L/S" high tone



SPECIFICATIONS	
Nominal voltage rating	12V
Current absorbed	<10A (the pair)
Total horn sound level	106 ÷ 118 dB a 2m
Sound level in band 1800 ÷ 3550 Hz	≥ 105 dB a 2m
Horn sound level L-H	≥ 108 dB a 2m
Fundamental frequency type H	480 ÷ 530 Hz
Fundamental frequency type L	380 ÷ 430 Hz

