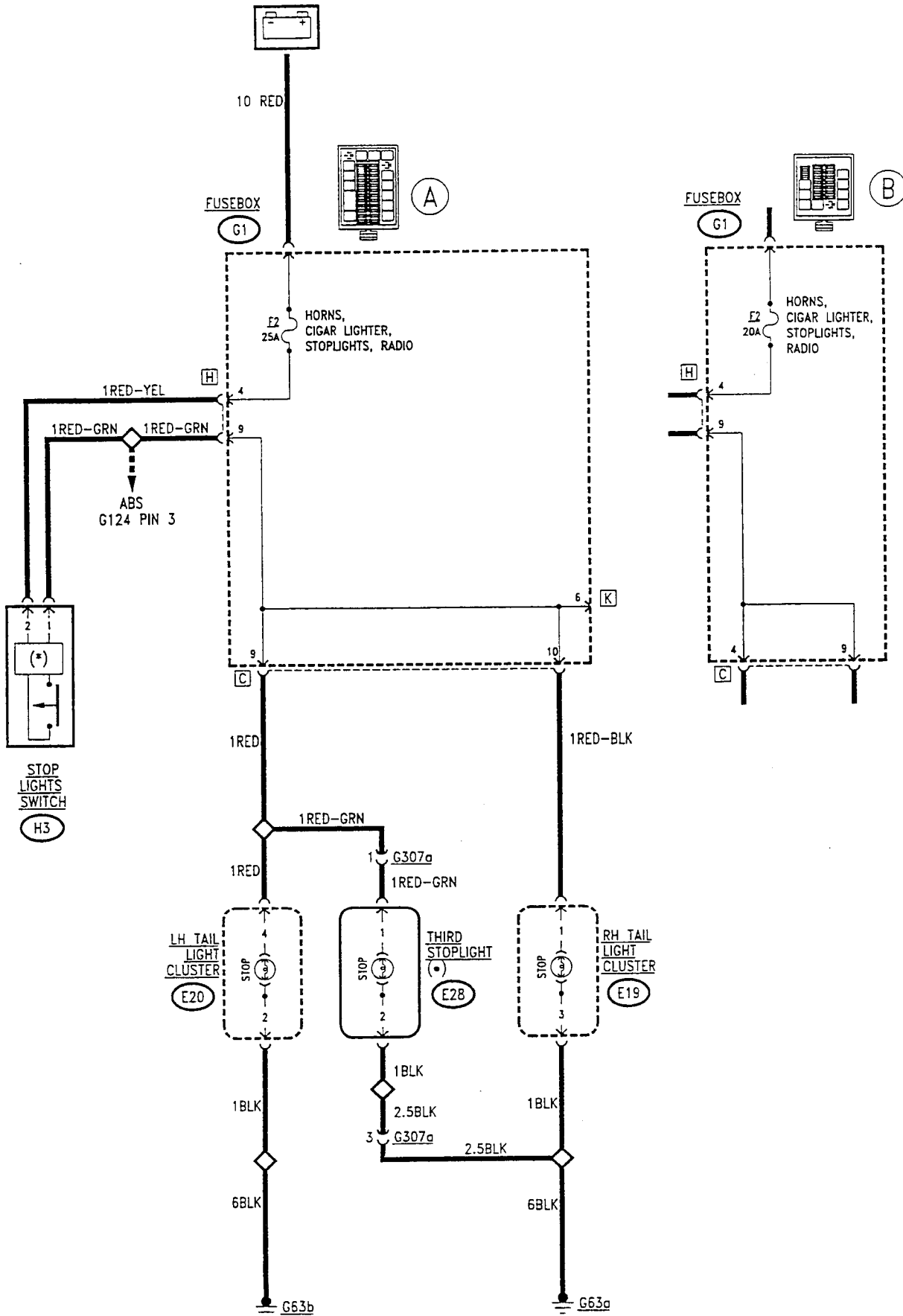


STOP LIGHTS

INDEX

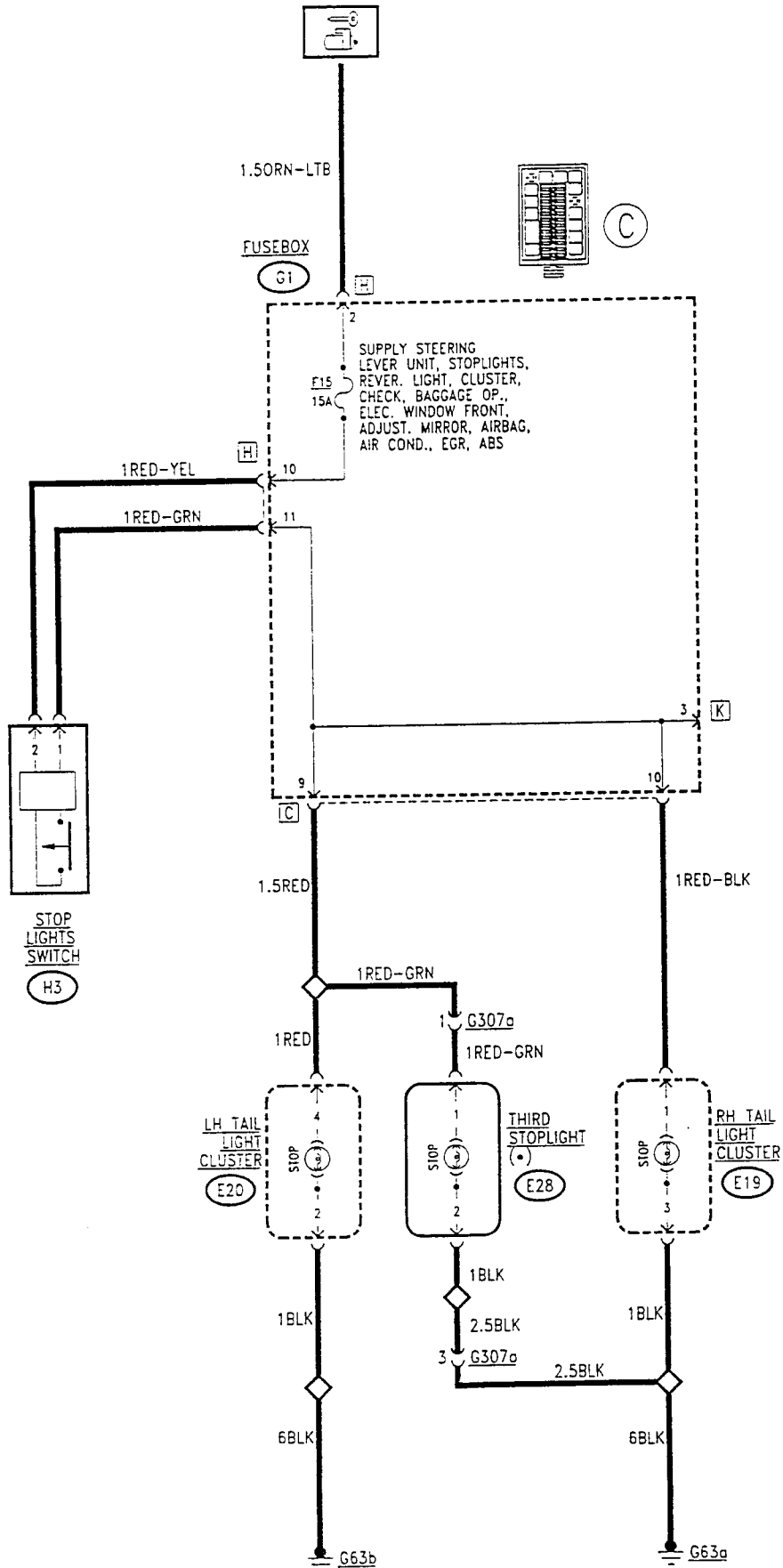
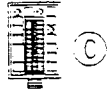
WIRING DIAGRAM	13-2
GENERAL DESCRIPTION	13-3
FUNCTIONAL DESCRIPTION	13-3
COMPONENTS AND CONNECTORS	13-3
FAULTFINDING TABLE	13-4
LOCATION OF COMPONENTS	13-5

WIRING DIAGRAM



(*) Anti-disturbance condenser, only fitted on the versions with radio
 (•) Only for certain Versions/Market

WIRING DIAGRAM



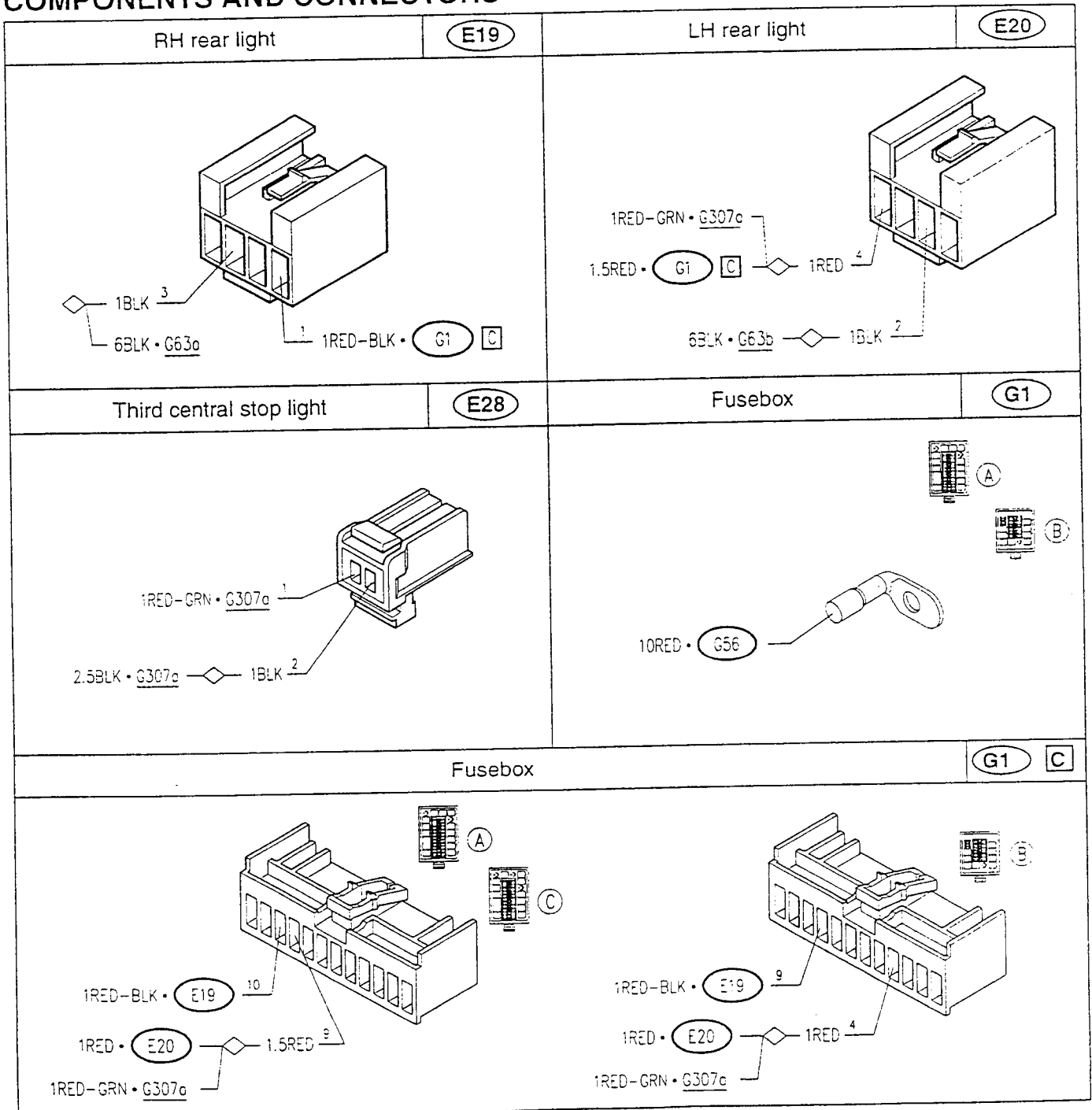
GENERAL DESCRIPTION

The car stop lights are operated each time the brake pedal is pressed; they are located at the rear in the side lights. The lights are turned on automatically through the switch on the brake pedal. The circuit is protected by a special fuse. The braking signal from the switch is also sent to the ABS system control unit which "recognizes" the situation and controls braking accordingly (see "ABS"). **N.B.:** In the versions on which a radio is installed, an anti-disturbance condenser is fitted on the switch to prevent interference in the area of the actual switch.

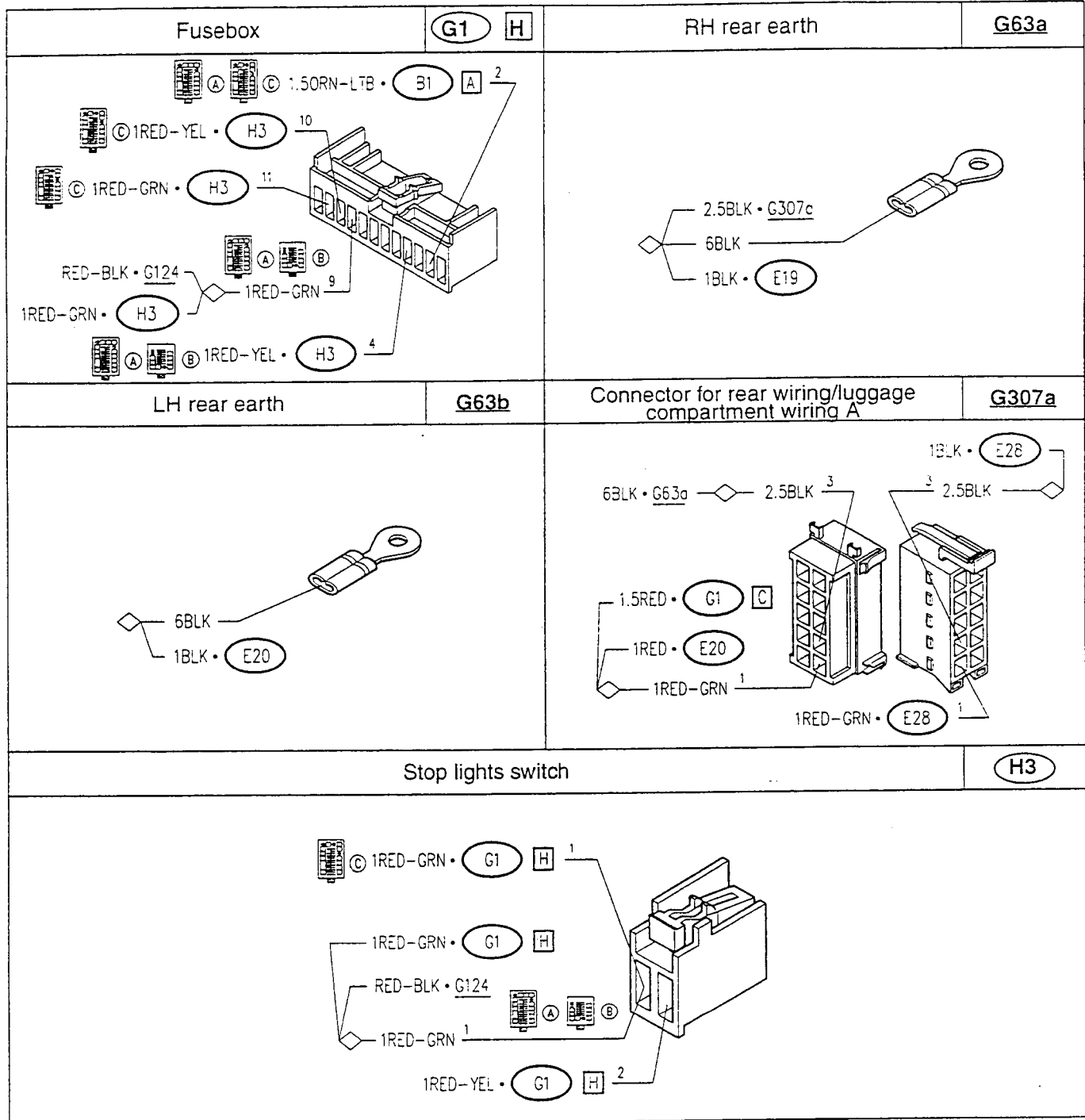
FUNCTIONAL DESCRIPTION

The stop lights circuit is supplied directly by battery voltage via fuse **F2** of fusebox **G1** (box "A" and "B"). For box "C" it receives the "key-operated" supply via fuse **F15** of box **G1**. The stop lights switch **H3** comprises a contact which closes when the brake pedal is pressed, through which the stop lights are supplied in the rear side lights **E19** (right), **E20** (left). For certain Versions/Markets the third central stop light **E28** is foreseen

COMPONENTS AND CONNECTORS



COMPONENTS AND CONNECTORS (cont.d)



FAULTFINDING TABLE

Failure	Component to be checked				
	F2	E20	E19	E28	H3
All the stop lights	•				•
RH stop light			•		
LH stop light		•			
Central stop light				•	

LOCATION OF COMPONENTS

